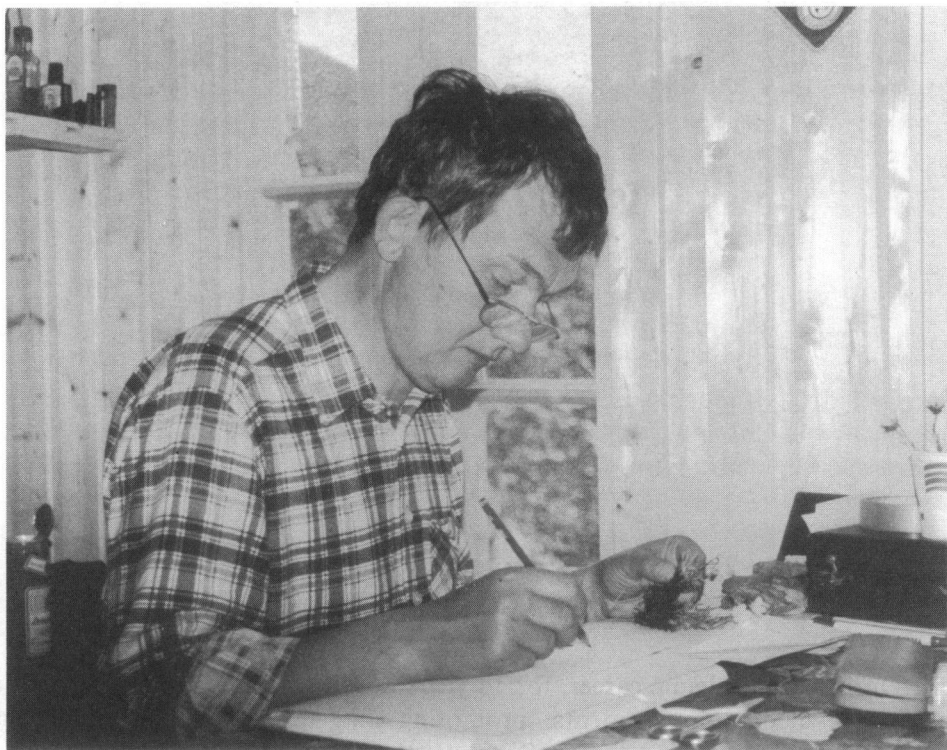


*IN MEMORIAM***ANDRZEJ MUSIAŁ**
(1947 – 1995)

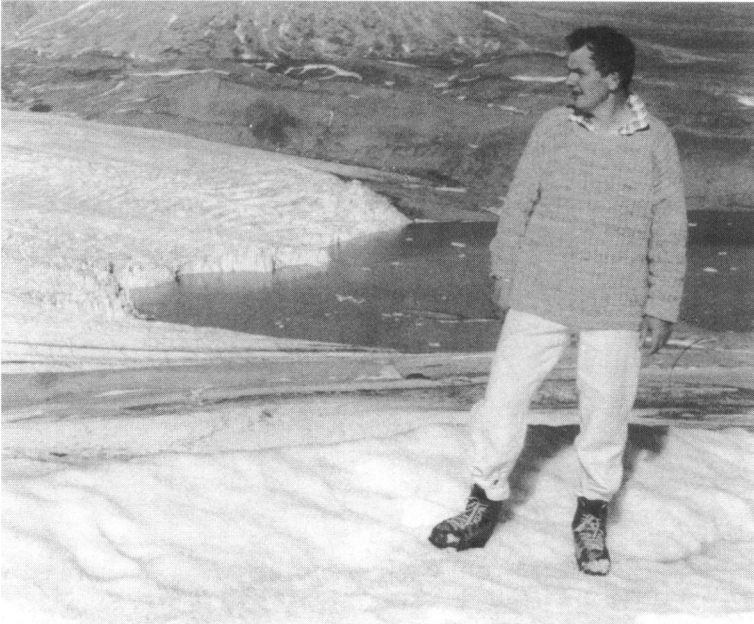
Dr hab. Andrzej Musiał, Camp Millar, Bellsund 1993.

Photo by P. Harton

It is a sad duty to commemorate a 47 years old friend and companion of recent polar expeditions. Andrzej Musiał died on 25 August 1995, after a one year struggle with a disease, which took him away from us in his prime.

He was born on 27 September 1947 in Warszawa, where he also went to school and where he later studied geography at the Warsaw University. He specialised in geomorphology. In 1970, after having received a M.Sc. degree for

a thesis *Morphological development of the southern part of Kolneńska High Plain, Czarnocin sheet 1:25.000*, he started to work as junior lecturer at the Warsaw Univeristy's Department of Geography. Delegated to post-graduate studies, he received his Ph.D. degree in 1978, for a disseration *Development of glacial relief of Kolneńska High Plain*. In his systematic geomorphological and geological research in the region of Northern Podlasie and Northern Mazowsze, he aimed at establishing the conditions of deglaciation of Pleistocene continental ice sheets. In 1992 he published *A study of the glacial relief of Northern Podlasie*, which in the following year gave him a title of assistatnt professor.



Andrzej Musiał on the Fridtiovbren, 1993.

Photo by K. Kossobudzki

During his academic career, for 14 years he was in charge of the Scientific Circle of Geography Students, promoting and taking part in numerous scientific expeditions and camps. Such was the origin of his first expedition to Spitsbergen in 1980. From that time on, geomorphology and geology of polar regions and their comparison to the regions of Northern Poland become his scientific obsession. In 1986, during a scientific scholarship from Stockholm University, he went to glaciological station in Tarfala, where he researched glacial relief of mountain ranges in polar regions. His fascination with the beauty of polar landscape and scientific interest made him organise another three Spitsbergen expeditions; in 1985, 1988 and 1993. Andrzej was the scientific director and co-organiser on all of them. The research conducted during those expeditions covered the field of general geography with special interest in

geomorphological, geological and glaciological issues. It was conducted within the Central Program of Basal Research, *Studies of life, litosphere and environments of polar regions*, co-ordinated by the Polish Academy of Sciences Institute of Geophysics.

Andrzej himself considered the following to be his major polar achievements:

- establishing maximum range of glaciers in this part of the archipelago in Holocene

- reconstruction of the transgression directions of Holocene and Pleistocene glaciers through analysis of spatial distribution of erratic material

- establishing regularities of the glacier surface differentiation during the process of deglaciation

- preparing and publishing of a geomorphological map of Nordenskiöld Land in 1:75 000

- research of the distribution of Quaternary deposits in Nordenskiöld Land, illustrated with four 1:25 000 maps

- four M.Sc. theses on polar themes prepared under his supervision

In the times of computers he believed in contact with nature through field research and direct observation. He always engaged his sensitivity and instinct of a discoverer in his scientific work. He often surprised us with his detailed knowledge of many different fields. Untiring, scrupulous, sometimes slightly hermetic. Often reluctant in proving his point, somewhat shy, but at the same



Andrzej Musiał, Bellsund 1993.

Photo by B. Horodyski

time persistent and, when it was needed, even unyielding. He left numerous publications, many original maps and significant scientific output.

“Gutek”, as he was known among friends, thought that it was only the beginning of his road. He gave his friendship to many, and friendship he deserved.

Bogdan HORODYSKI
Warszawa

Polar publications by Dr hab. Andrzej Musiał

1981. Druga Polarna Wyprawa Koła Naukowego Studentów Wydziału Geografii i Studiów Regionalnych Uniwersytetu Warszawskiego „Spitsbergen '80”. — Materiały Sympozjum Polarnego, 2, sprawozdania. Sosnowiec.
- Badania geomorfologiczne w NW części Ziemi Nordenskiöld (Spitsbergen Zachodni). — Materiały studenckiej sesji polarnej. Warszawa, 19–30.
 - Badania KNSG UW na Ziemi Nordenskiöld (Spitsbergen Zachodni) w lecie 1980 roku. — Materiały studenckiej sesji polarnej. Warszawa, 7–11.
 - Spitsbergen (report). — *Merkuriusz* 1/132, styczeń.
1982. Mapa geomorfologiczna Ziemi Nordenskiöld, Spitsbergen Zach. 1:75 000. — *Prac. Repr. Kartograficznej WGiSR UW.*
1983. Głazy narzutowe w NW części Ziemi Nordenskiöld. — *Polskie badania polarne 1970–1982.* Toruń, 150–155.
- (with M. Bogacki) Badania polarne Wydziału Geografii i Stud. Regionalnych Uniwersytetu Warszawskiego w okresie 1970–1982. — *Polskie badania polarne 1970–1982.* Toruń, 113–116.
1984. Ancient glaciations in the north–western part of Nordenskiöld Land and their extent in the light of characteristic occurrence of erratics. *Miscellanea Geographica.* Wyd. Uniw. Warsz., 57–65.
- Ancient glaciations in the north–western part of Nordenskiöld Land. *Resumes des communications 25^e Congres International de Geographie.* 4. Paris.
1985. Lodowiec Linneusza. — *Poznaj Świat*, 2.
- Traces of the glaciations in the northwest part of Nordenskiöld Land (West Spitsbergen). *Polish Polar Research* 6, 4: 497–513.
1987. (with B. Horodyski and K. Kossobudzki). Wykorzystanie panoramicznych zdjęć naziemnych do kartowania geomorfologicznego obszarów polarnych. *Fotointerpretacja w badaniach polarnych.* — *Rozprawy Uniw. M. Kopernika.* Toruń, 40–45.
1988. (with B. Horodyski and K. Kossobudzki) The use of panoramic ground–photographs in geomorphologic mappings of polar regions. Example from West Spitsbergen. — *Miscellanea Geographica.* Warszawa, 79–83.
- (with J. Laćika) Relief–forming processes in the polar zone. Example from Nordenskiöld Land (West Spitsbergen). — *Miscellanea Geographica.* Warszawa, 69–77.
 - Rzeźba glacjalna masywu Kebnekaise (szwedzka Laponia). *XV Syposium Polarne.* — Wyd. Uniw. Wrocławskiego. Wrocław, 115–123.
 - (with collaborators) Geomorphological map of Nordenskiöld Land (West Spitsbergen) 1:75 000. Chair of Cartography. Warsaw University.

- Morphologie outline of western part of Nordenskiöld Land (West Spitsbergen). Commentary to the Geomorphological map of Nordenskiöld Land 1:75 000. Chair of Cartography. Warsaw University.
- Akademicska Wyprawa Polarna Spitsbergen '88. — *Przegląd Geograficzny*, 61: 392–395.
- (with B. Horodyski and K. Kossobudzki) Opracowanie osadów czwartorzędowych w SW części Nordenskiöld Land, ze szczególnym uwzględnieniem materiału erratycznego. — *Archiwum Instytutu Geofizyki PAN. Maszynopis*, 20 pp.
- (with B. Horodyski, K. Kossobudzki and J. Drecki) Mapa osadów czwartorzędowych NW części Ziemi Nordenskiölda 1:25 000. — *Archiwum Instytutu Geofizyki PAN.*
- (with B. Horodyski, K. Kossobudzki and J. Drecki) Opracowanie rozprzestrzenienia osadów czwartorzędowych w NW części Ziemi Nordenskiölda ze szczególnym uwzględnieniem materiału erratycznego. — *Archiwum Instytutu Geofizyki PAN. Maszynopis*, 20 pp.
- (with J. Drecki, B. Horodyski and K. Kossobudzki) Mapa osadów czwartorzędowych otoczenia Orustdalen 1:25 000. — *Archiwum Instytutu Geofizyki PAN.*
- 1989. Stare moreny na Lågnesfya (Spitsbergen Zachodni). Dorobek i perspektywy polskich badań polarnych. — *Rozprawy Uniwersytetu M. Kopernika. Toruń*, 114–117.
- (with J. Drecki, B. Horodyski and K. Kossobudzki) Opracowanie osadów czwartorzędowych w SW części Ziemi Nordenskiölda. *Archiwum Instytutu Geofizyki PAN.* — *Maszynowis*, 20 pp.
- (with B. Horodyski and K. Kossobudzki) Mapa osadów czwartorzędowych SW części Ziemi Nordenskiölda 1:25 000. — *Archiwum Instytutu Geofizyki PAN.*
- 1990. Lodowiec po szwedzku. — *Poznaj Świat*, 1/2: 442.
- Geomorphological map of Nordenskiöld Land (West Spitsbergen) 1:75 000. — SAV Bratislava. 2-nd ed. (with collaborators).
- Morphologic outline of western part of Nordenskiöld Land (West Spitsbergen). Commentary to the Geomorphological map of Nordenskiöld Land. — SAV Bratislava. 2nd ed.
- Polar Research of Faculty of Geography and Regional Studies of the University of Warsaw at Spitsbergen in the Years 1980–1988. — *Miscellanea Geographica. Warszawa*, 4: 49–51.
- (with B. Horodyski and K. Kossobudzki) Rozwój rzeźby zachodniej części Ziemi Nordenskiölda (Spitsbergen Zachodni). — *Archiwum Instytutu Geofizyki PAN. Maszynopis*, 8 pp.
- (with B. Horodyski and K. Kossobudzki) Quaternary Deposits of Orustdalen (West Spitsbergen). — *Miscellanea Geographica. Warszawa*, 4: 53–62.
- 1991. (with B. Horodyski and K. Kossobudzki) Development and distribution of Quaternary deposits between the Greenland Sea and Grönfjorden (West Spitsbergen). *Polar Session Arctic Environment Research. — Spitsbergen Geographical Expeditions. Lublin*, 257–266.
- (with B. Horodyski and K. Kossobudzki) Koncepcja mapy osadów czwartorzędowych zach. części Ziemi Nordenskiölda (Spitsbergen Zachodni). — *Abstrakty. XVIII Sympozjum Polarne, Szczecin — Świnoujście*, p. 72.
- (with J. Drecki, B. Horodyski and K. Kossobudzki) Quaternary sediments of the southwestern Nordenskiöld Land, West Spitsbergen. — *Polish Polar Research*, 12, 2: 137–147.
- (with B. Horodyski and K. Kossobudzki) Development of surface relief of the western part of Nordenskiöld Land (West Spitsbergen). — *Miscellanea Geographica*, 5: 17–23.
- 1993. (with B. Horodyski and K. Kossobudzki) Late Quaternary evolution of the western Nordenskiöld Land. — *Polish Polar Research*, 14, 3: 259–274.
- 1994. (with B. Horodyski and K. Kossobudzki) La morphogenese de la terre de Nordenskiöld entre la Mer du Grönland, le Grönfjorden et le Bellsund. — *Miscellanea Geographica. Warszawa*, 6: 35–39.
- Akademicska Wyprawa Polarna Wydziału Geografii i Studiów Regionalnych Uniwersytetu Warszawskiego — Spitsbergen '93. — *Biuletyn Polarny, Kraków — Lublin*, 2: 29–30.
- Fridtjovbreen sediments and forms (West Spitsbergen). — *XXI Polar Symposium. Warszawa*: 149–157.
- Lodowy spacer. — *Poznaj Świat*, 1, 456, 25–27.
- 1995. Spitsbergen pełen deserów. — *Poznaj Świat*, 1, 459, 44–46.