



FRACTURE MECHANICAL PROPERTIES OF ROCK-LIKE MATERIALS UNDER HALF SYMMETRIC LOADING

ZHI WANG*¹, JIAJIA ZHOU², LONG LI³

The authors studied the fracture mechanical properties under half-symmetric loading in this paper. The stress distribution around the crack tip and the stress intensity factor of three kinds of notched specimens under half symmetric loading were compared. The maximum tensile stress σ_{max} of double notch specimens was much greater than that of single notch specimens and the maximum shear stress τ_{max} was almost equal, which means that the single notch specimens were more prone to Mode II fractures. The intensity factors K_{II} of central notch specimens were very small compared with other specimens and they induced Mode I fractures. For both double notch and single notch specimens, K_{II} was kept at a constant level and did not change with the change of a/h , and K_{II} was much larger than K_I . K_{II} has the potential to reach its fracture toughness K_{IIC} before K_I and Mode II fractures occurred. Rock-like materials were introduced to produce single notch specimens. Test results show that the crack had been initiated at the crack tip and propagated along the original notch face, and a Mode II fracture occurred. There was no relationship between the peak load and the original notch length. The average value of K_{IIC} was about $0.602 \text{ MPa}\cdot\text{m}^{1/2}$, and K_{IIC} was about 3.8 times K_{IC} . The half symmetric loading test of single notch specimens was one of the most effective methods to obtain a true Mode II fracture and determine Mode fracture toughness.

Keywords: half symmetric loading, Mode II fracture; fracture toughness, rock-like material, interaction integral method

¹ Dr., Zhengzhou University, School of Mechanics & Engineering Science, No.100 Science Avenue, 450001 Zhengzhou, China, *Corresponding author, e-mail: wangzhi@zzu.edu.cn

² Dr., Zhengzhou University, School of Mechanics & Engineering Science, No.100 Science Avenue, 450001 Zhengzhou, China, e-mail: zhjj0771@163.com

³ Mr., Zhengzhou University, School of Mechanics & Engineering Science, No.100 Science Avenue, 450001 Zhengzhou, China, e-mail: 1363884652@qq.com

1. INTRODUCTION

In-plane shear (Mode II) rock fractures have attracted increasing interest of researchers in mining and geological and rock engineering. A lot of test methods have been proposed to study Mode II fractures of rock and concrete, such as the four-point bending test [1-2], punch-through shear test [3-4], four-point shear [5], compression shear [6], compact tension-shear [7] and half symmetric loading test [8-10]. The test results show that Mode II fracture toughness can be obtained through a half symmetric loading test for concrete [11]. The shear stress around the crack tip is much higher than the tensile stress, which is perpendicular to the original crack face for a half symmetric loading specimen. The crack propagates along the original crack face and there is no relationship between the Mode II fracture toughness, K_{IIC} , and initial fracture length. However, K_{IIC} increases with the increase of the length and the decrease of the height of the specimens. It is therefore suggested that the half symmetric loading test would be a potential effective method to determine Mode II fracture toughness. In this paper, we use white cement to simulate rock-like materials and specimens with a central notch, double edge notches, and a single edge notch under half symmetric loading to study the fracture mechanical properties.

2. EXPERIMENT SCHEME

The experimental rock-like materials were produced by white cement and the mechanical parameters such as tensile strength, σ_t , compressive strength, σ_c , Elastic modulus, E , Poisson ratio, μ , Mode I fracture toughness, and K_{IC} , are listed in Table 1. As shown in Figure 1, specimens with a central notch, double edge notches, and a single edge notch were prepared. Two cushion blocks were used to apply half symmetric loading. The specimen was of a rectangular shape measuring 70mm \times 70 mm \times 30 mm. Notches were prefabricated and the crack length, $2a$, was about 20mm. The electric hydraulic servo testing machine was introduced and the loading rate was set at 5 mm/min. The peak value of the load, P_M was recorded during the experiment.

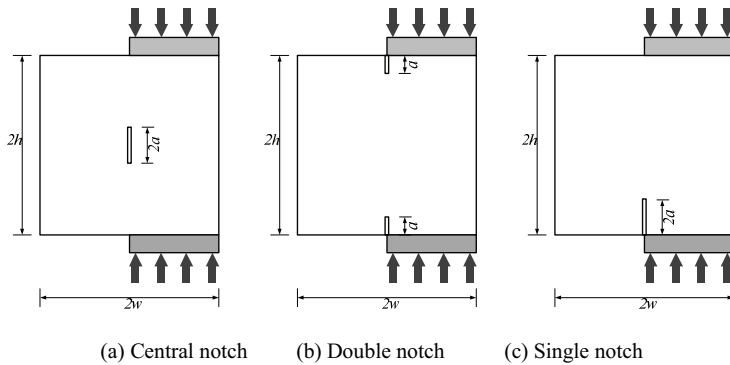


Fig. 1. Specimens and loading

Table 1. Mechanical parameters

σ_t (MPa)	σ_c (MPa)	E (GPa)	μ	K_{IC} (MPa \times m ^{1/2})
2.04	24.261	4.68	0.22	0.158

3. FINITE ELEMENT SIMULATION

The stress intensity factor (SIF) is an important index of brittle fractures which consider the singularity of the crack tip stress and effectively reflect the strength of the elastic stress field of the crack tip [12-13]. In comparison to the traditional displacement extrapolation method, the interaction integral method offers better accuracy, fewer mesh requirements, and ease of use [14-17].

An auxiliary field of the crack tip is established to separate and obtain the Mode I and Mode II stress intensity factors in the real field for the interaction integral method. Around the crack tip, the auxiliary field must satisfy the equilibrium conditions, the physical equations, and the geometric relationship of any possible displacement field and stress field [18].

The interaction integral is defined as:

$$(3.1) \quad I = - \int_V q_{i,j} (\sigma_{kl} \varepsilon_{kl}^{aux} \delta_{ij} - \sigma_{kj}^{aux} u_{k,i} - \sigma_{kj} u_{k,i}^{aux}) dV / \int_S \delta q_n dS$$

where:

$\sigma_{ki}, \sigma_{kj}, u_{k,i}$ – the stress, strain, and displacement, $\sigma_{kj}^{aux}, u_{k,i}^{aux}$ – the stress, strain, and displacement of the auxiliary field, $q_{i,j}$ – the crack-extension vector.

The interaction integral is associated with the stress-intensity factors as:

$$(3.2) \quad I = \frac{2}{E^*} (K_I K_I^{aux} + K_{II} K_{II}^{aux}) + \frac{1}{G} K_{III} K_{III}^{aux}$$

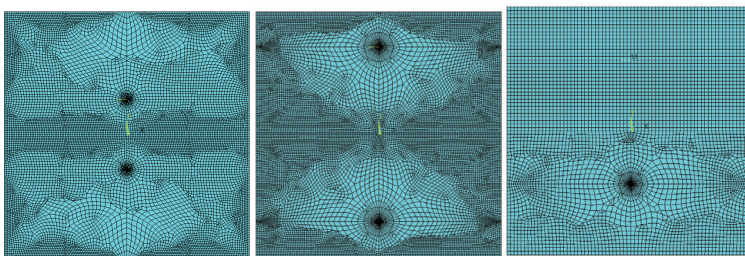
where:

K_I, K_{II}, K_{III} – Mode I, II, and III stress intensity factors, $K_I^{aux}, K_{II}^{aux}, K_{III}^{aux}$ – auxiliary Mode I, II, and III stress intensity factors, E – Young's modulus, $E^* = E$ for plane stress and $E^* = E/(1-\mu^2)$ for plane strain, μ – Poisson's ratio, G – shear modulus.

For the plane problem, K_{III} can be ignored and $K_I^{aux} = 1, K_{II}^{aux} = 0, K_I^{aux} = 0, K_{II}^{aux} = 1$. The Mode I and Mode II stress intensity factors can be obtained through the two interaction integral calculation:

$$(3.3) \quad K_I = \frac{E^*}{2} I_1, \quad K_{II} = \frac{E^*}{2} I_2$$

The interaction integral method of finite element software ANSYS was adopted. The mesh for the different type specimens is shown in Figure 2. The singular element of the crack tip and the plane-183 element of the non-crack zone are introduced separately. The value of loading is set to 1 MPa.



(a) Central notch

(b) Double notch

(c) Single notch

Fig. 2. Meshing

Figure 3 and Figure 4 are tensile and shear stress contours. It can be seen from the figure that the maximum tensile stress σ_{max} and maximum shear stress τ_{max} did not occur at the crack tip for central notch specimens and had a negative effect due to stress concentration. The ultimate destruction caused by sustained loading may be compression failure. The σ_{max} and τ_{max} were shown at the crack tip for double notch specimens and only τ_{max} was shown at the crack tip for single notch specimens. The σ_{max} of double notch specimens was much greater than that of single notch specimens in the case of crack length $2a$. However, the maximum shear stress values were almost equal, which means that the single notch specimens were more prone to Mode II fractures.

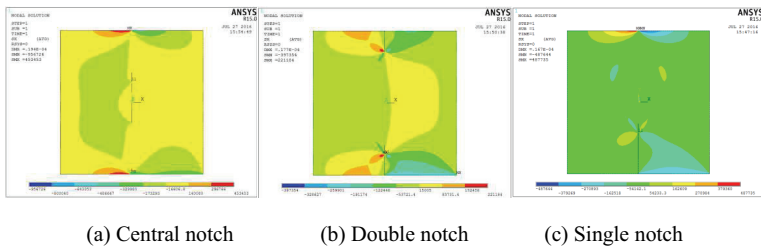


Fig. 3. Tensile stress

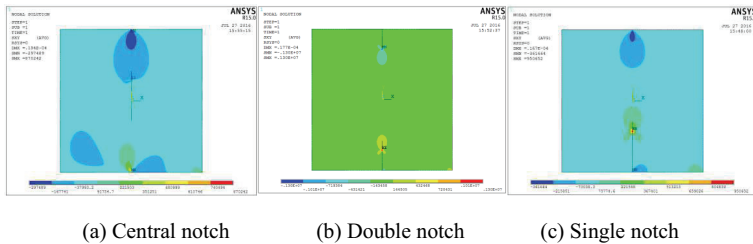


Fig. 4. Shear stress

The results for the three different specimens are listed in Table 2. For central notch specimens, the stress concentration was not obvious under half symmetric loading. Intensity factors K_I , K_{II} , and the K_{II}/K_I ratio were increased with the increase of a/h (see Figure 5). But K_{II} was very small compared with other specimens and it was difficult for a Mode II fracture to occur because of the lower tensile strength of brittle materials. For both double notch and single notch specimens, K_{II} was kept at a constant level and did not change with the change of a/h . For double notch specimens, K_I increased first and then decreased, and K_{II}/K_I decreased first and then increased with the increase of a/h . For single notch specimens, K_{II} was 1248 times as much as K_I when $a/h=0.5$, and K_{II} has the potential to reach fracture toughness K_{IIC} before K_I and a Mode II fracture occurred. Consequently, the single

notch specimens should be adopted to carry out shear fracture toughness testing and to determine Mode II fracture toughness K_{IIc} .

Table 2. Results of stress intensity factors K_I and K_{II}

Type	$2a(\text{mm})$	a/h	$K_I(\text{kPa}\times\text{m}^{1/2})$	$K_{II}(\text{kPa}\times\text{m}^{1/2})$	K_{II}/K_I
Central notch	10	0.14	0.46	1.74	3.79
	15	0.21	0.55	2.94	5.32
	20	0.29	0.63	4.44	7.04
	25	0.36	0.70	6.28	8.99
	35	0.50	0.81	11.35	14.08
Double notch	10	0.14	0.19	41.40	217.57
	15	0.21	1.34	42.84	31.94
	20	0.29	1.43	43.73	30.54
	25	0.36	1.18	44.23	37.49
	35	0.50	0.57	44.10	77.20
Single notch	10	0.14	1.45	43.84	30.16
	15	0.21	0.89	44.91	50.72
	20	0.29	0.37	45.30	123.43
	25	0.36	0.10	45.20	472.85
	35	0.50	0.03	43.44	1248.87

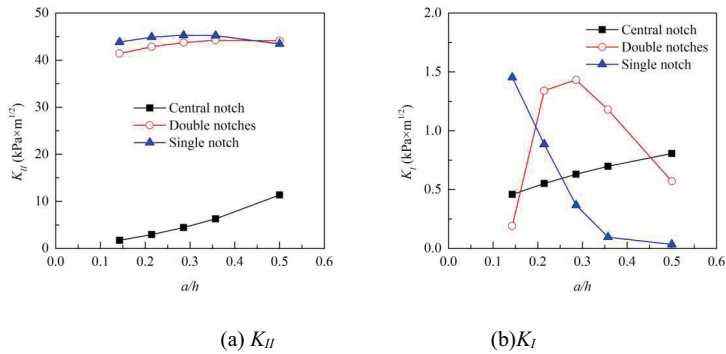


Fig. 5. Relationship between stress intensity factors and a/h

4. EXPERIMENTAL RESULTS AND ANALYSIS

In order to verify the results of finite element calculation and obtain a true Mode II fracture, single notch and double notch specimens under half symmetric loading were adopted to determine the Mode fracture toughness of rock-like materials. The strain distribution of the crack tip was measured on the surface also (see Figure 6). Specimens of the same size as those used with the finite element method were used here as well.

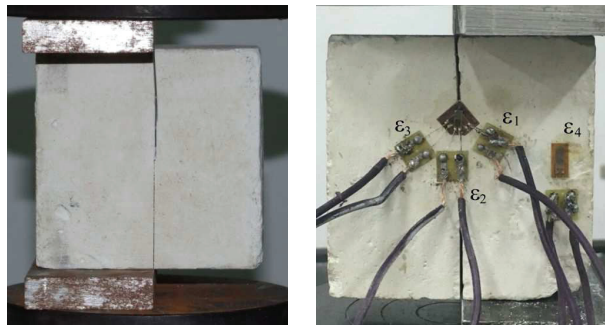


Fig. 6. Loading and strain gauge Strain gauge arrangement

Figure 7 shows the fracture trajectory of specimens under half symmetric loading with different notch lengths. It can be seen from the figure that the crack initiated at the crack tip, propagated along the original notch face, and formed a main crack with an increase of the load. Other

longitudinal cracks occurred and the specimens were eventually destroyed by compression loading. There was no relationship between the peak load and the original notch length, which is in agreement with the calculation results of the FEM. The average value of K_{IIc} was about 0.602 $\text{MPa}\times\text{m}^{1/2}$, and K_{IIc} was about 3.8 times that of K_{Ic} , which is consistent with the well-known conclusion, $K_{IIc}/K_{Ic}=2\sim 4$. The half symmetric loading test of single notch specimens was one of the most effective methods to obtain a true Mode II fracture and determine Mode fracture toughness.



Fig. 7. Fracture trajectory

The results of the strain tests are recorded during loading. The maximum strain, ε_{\max} , minimum strain, ε_{\min} , maximum principal stress, σ_{\max} , minimum principal stress, σ_{\min} , maximum shear stress, τ_{\max} , and the angle of principal stress, φ , can be obtained by Formula (4.1) to (4.4).

$$(4.1) \quad \begin{matrix} \varepsilon_{\max} \\ \varepsilon_{\min} \end{matrix} = \frac{1}{2}(\varepsilon_{0^\circ} + \varepsilon_{90^\circ}) \pm \sqrt{\frac{1}{2}[(\varepsilon_{0^\circ} - \varepsilon_{45^\circ})^2 + (\varepsilon_{45^\circ} - \varepsilon_{90^\circ})^2]}$$

$$(4.2) \quad \varphi = \frac{1}{2} \tan^{-1} \left[\frac{2\varepsilon_{45^\circ} - \varepsilon_{0^\circ} - \varepsilon_{90^\circ}}{\varepsilon_{0^\circ} - \varepsilon_{90^\circ}} \right]$$

$$(4.3) \quad \begin{matrix} \sigma_{\max} \\ \sigma_{\min} \end{matrix} = \frac{E}{2} \left[\frac{\varepsilon_{0^\circ} + \varepsilon_{90^\circ}}{1 - \mu} \pm \frac{1}{1 + \mu} \sqrt{(\varepsilon_{0^\circ} - \varepsilon_{90^\circ})^2 + (2\varepsilon_{45^\circ} - \varepsilon_{0^\circ} - \varepsilon_{90^\circ})^2} \right]$$

$$(4.4) \quad \tau_{\max} = \frac{\sigma_{\max} - \sigma_{\min}}{2}$$

Figure 8 shows the variation of strain and stress loading times. It can be seen that the crack tip strains (such as ε_1 , ε_2 , ε_3 , ε_{\max} , ε_{\min}) were significantly greater than other location (ε_4), meaning that the stress concentration effect of the crack tip was obvious; this would then lead to fracture (see Figure 8(a)). The angle of the maximum principal stress and strain gauge ε_1 was about 30° , which agrees with the Mode I fracture under pure shear loading [19]. Thus, for the double notch specimen, the true Mode II fracture can't be obtained under half symmetric loading, which agrees with the numerical simulation results listed in Table 2.

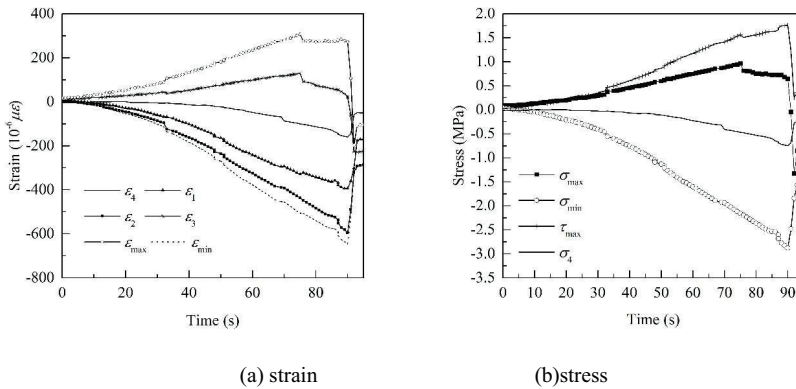


Fig. 8. Strain and Stress distribution

5. CONCLUSIONS

Fracture mechanical properties under half symmetric loading are analyzed in this paper. The stress distribution around the crack tip and stress intensity factors of three kinds of notched specimens under half symmetric loading were compared through the interaction integral method of ANSYS. The maximum tensile stress σ_{max} of double notch specimens was much greater than that of single notch specimens and their maximum shear stress values τ_{max} were almost equal, meaning that the single notch specimens were more prone to Mode II fractures.

For central notch specimens, the intensity factors K_{II} were very small compared with other specimens and a Mode II fracture was not easy to obtain because of the lower tensile strength of brittle materials. For both double notch and single notch specimens, K_{II} was kept at a constant level and did not change with the change of a/h . For single notch specimens, K_{II} was much larger than K_I , and K_{II} had the potential to reach its fracture toughness K_{IIC} before K_I and Mode II fractures occurred.

Test results of single notch specimens under half symmetric loading show that the crack initiated at the crack tip and propagated along the original notch face, and a Mode II fracture occurred. There was no relationship between the peak load and the original notch length which is in agreement with the calculation results of the FEM. The average value of K_{IIC} was about $0.602 \text{ MPa}\times\text{m}^{1/2}$, and K_{IIC} was about 3.8 times the value of K_{IC} . The half symmetric loading test of single notch specimens was

one of the most effective methods to obtain a true Mode II fracture and determine Mode fracture toughness.

6. ACKNOWLEDGEMENTS

This research is supported by the National Natural Science Foundation of China (Grant No. 51404212), the Foundation for University Key Teacher by the He'nan Educational Committee (Grant No. 2016GGJS-002) and the program of China Scholarships Council (Grant No. 201608410176)

REFERENCES

1. Huang J A, Wang S: "An experimental investigation concerning the comprehensive fracture toughness of some brittle rocks", *International Journal of Rock Mechanics & Mining Science & Geomechanics Abstracts* 22(2): 99-104, 1985.
2. Schlangen E, Mier J G M V, "Crack propagation in sandstone: Combined experimental and numerical approach", *Rock Mechanics & Rock Engineering* 28(2): 93-110, 1995.
3. Petit J P, "Normal stress dependent rupture morphology in direct shear tests on sandstone with applications to some natural fault surface features", *International Journal of Rock Mechanics & Mining Science & Geomechanics Abstracts* 25(6) :411-419, 1988.
4. Watkins J, "Fracture toughness test for soil-cement samples in mode II", *International Journal of Fracture* 23(4):135-138, 1983.
5. Bazant Z P, Pfeiffer P A, "Shear fracture tests of concrete", *Materials and Structures* 19(2):111-121, 1986.
6. Zhi Wang, Jianhua Hou, Chaoya Wang, Fei Yang, "An Implementation Method of Shear Plane Fracture of Multi-Crack Rock Under Compression Shear Loading", *Electronic Journal of Geotechnical Engineering* (21.12) : 4595-4602, 2016
7. Lo K W, Gong Y B, Tamilselvan T, "A proposed specimen for KIIC testing", *International Journal of Fracture* 124(3/4):127-137, 2003.
8. Shen Xinjin, Feng Jinlong, Dai Shuhong, "Study on influence of boundary conditions on results of four point shear concrete speckles experiments", *Chinese Journal of Rock Mechanics and Engineering* 27(2): 3528-3534, 2008.
9. Xu Shilang, Zhao Yanhua, "Numerical simulation of mode II fracture and failure processes in concrete by 3-dimensional nonlinear FEM", *Journal of Hydroelectric Engineering* 23(5):15-21, 2004.
10. Deng Aiming, Guo Lianmeng, Xu Daoyuan, "Comparative research on fracture toughness KIIC of two types of mode-II concrete specimens", *Journal of disaster prevention and mitigation engineering* 33(2):190-193, 2013.
11. Hu Shaowei Hu Liang, "Comparative study on shear fracture process of concrete with two different loading methods", *China Civil Engineering Journal* 49(6):25-31, 2016.
12. Chen Z Z, Tokaji K, "Effects of particle size on fatigue crack initiation and small crack growth in SIC particulate-reinforced aluminum alloy composites", *Materials Letters* 58:2314-2321, 2004.
13. Liu X Y, Xiao Q Z, Karihaloo B L, "XFEM for direct evaluation of mixed mode SIFs in homogeneous and bi-materials", *International Journal for Numerical Methods in Engineering* 59(8):1103-1118, 2004.

14. Daimon, Ryutaro, Okada, Hiroshi, "Mixed-mode stress intensity factor evaluation by interaction integral method for quadratic tetrahedral finite element with correction terms", *Engineering Fracture Mechanics*, 115:22-42, 2014.
15. Chiaromonte Maurizio M, Shen Yongxing, KeerMLEon M, Lew Adrian J, "Computing stress intensity factors for curvilinear cracks", *International Journal for Numerical Methods in Engineering* 104(4):260-296, 2015.
16. Kim J H, Paulino G H, "The interaction integral for fracture of orthotropic functionally graded materials: Evaluation of stress intensity factors", *International Journal of Solids and Structures* 40:3967-4001, 2003.
17. Amit, K.C., Kim, J.-H, "Interaction integrals for thermal fracture of functionally graded materials", *Engineering Fracture Mechanics* 75: 2542-2565, 2008.
18. GONG Jing-quan, ZHANG Shao-qin, LI He, ZHANG Chen-yu, "Computation of the Stress Intensity Factor Based on the Interaction Integral Method", *Journal of Nanchang Hangkong University: Natural Sciences* 29(1):42-48, 2015.
19. WANG Zhi, RAO Qiuhua, XIE Haifeng, "Experimental study on time-dependent stress and strain of in-plane shear (Mode II) fracture process of rock", *Journal of Central South University of Technology*, 15(s1): 496-499, 2008.

LIST OF FIGURES AND TABLES:

Fig. 1. Specimens and loading

Rys. 1. Próbkki i obciążenie

Fig. 2. Meshing

Rys. 2. Zazębienie

Fig. 3. Tensile stress

Rys. 3. Naprężenie rozciągające

Fig. 4. Shear stress

Rys. 4. Naprężenie ścinające

Fig. 5. Relationship between stress intensity factors and a/h

Rys. 5. Związek pomiędzy współczynnikami intensywności naprężenia i a/h

Fig. 6. Loading and strain gauge Strain gauge arrangement

Rys. 6. Ładowanie i tensometr. Ustawienie tensometru

Fig. 7. Fracture trajectory

Rys. 7. Trajektoria pęknięć

Fig. 8. Strain and Stress distribution

Rys. 8. Rozkład odkształceń i naprężeń

Tab. 1. Mechanical parameters

Tab. 1. Parametry mechaniczne

Tab. 2. Results of stress intensity factors K_I and K_{II}

Tab. 2. Wyniki współczynników intensywności naprężenia K_I i K_{II}

Received: 08.01.2017

Revised: 11.01.2018

FRACTURE MECHANICAL PROPERTIES OF ROCK-LIKE MATERIALS UNDER HALF SYMMETRIC LOADING

Streszczenie:

Słowa kluczowe: obciążenie półsymetryczne, pęknięcie w trybie II, odporność na kruche pęknięcie, materiał skalny, metoda integralnej interakcji

W niniejszej pracy przedstawiono właściwości mechaniczne pęknięcia materiałów skalnych pod półsymetrycznym obciążeniem, w wyniku połączenia analizy teoretycznej, symulacji numerycznych oraz badań eksperymentalnych. W celu ujawnienia mechanizmu uszkodzenia, przygotowano trzy rodzaje próbek z karbem pod półsymetrycznym obciążeniem i zbadano rozkład naprężeń wokół pęknięcia podczas procesu obciążenia. Przyjęto metodę integralnej interakcji oprogramowania elementów skończonych ANSYS w celu obliczenia współczynnika intensywności naprężenia (SIF). Ponadto, wprowadzono pojedynczy element pęknięcia oraz element płaszczyzny 183 w strefie bez pęknięć. Zgodnie z analizą numeryczną i wynikami badań eksperymentalnych, maksymalne naprężenie rozciągające podwójnych próbek z karbem okazało się znacznie większe niż w przypadku pojedynczych próbek z karbem, a ich maksymalne naprężenie ścinające było prawie takie samo, co oznacza, że pojedyncze próbki z karbem były bardziej podatne na pęknięcie w trybie II. Współczynniki intensywności KII środkowych próbek z karbem były bardzo niskie w porównaniu z innymi próbkami oraz tymi, które wywoływały pęknięcia w trybie I. Zarówno w przypadku próbek z podwójnym i pojedynczym karbem, KII zostało utrzymane na stałym poziomie i nie uległo zmianie wraz ze zmianą a/h , a ponadto KII było znacznie większe niż KI. KII może potencjalnie osiągać odporność na kruche pęknięcie KIIC przed KI. W rezultacie mamy do czynienia z pęknięciami w trybie II. Wprowadzono materiały skalne w celu wytworzenia próbek z pojedynczym karbem. Pęknięcie rozpoczęło się na samej górze i rozprzestrzeniło się wzdłuż pierwotnej powierzchni karbu, w wyniku czego wystąpiło pęknięcie w trybie II. Nie zaobserwowano zależności pomiędzy szczytowym obciążeniem i oryginalną długością karbu. Średnia wartość KIIC była około 3,8 razy większa niż wartość KIC. Pęknięcia w górnej części były znacznie większe niż w innym miejscu, co oznacza, że koncentracja naprężeń pęknięcia w górnej części była oczywista, co z kolei może prowadzić do pęknięcia. Kąt maksymalnego głównego naprężenia wyniósł około 30° , co było zgodne z pęknięciem w trybie I w warunkach czystego obciążenia ścinającego. Badanie półsymetrycznego obciążenia próbek z pojedynczym karbem okazało się być jedną z najskuteczniejszych metod uzyskiwania prawdziwego pęknięcia w trybie II i określenia odporności na kruche pęknięcie.